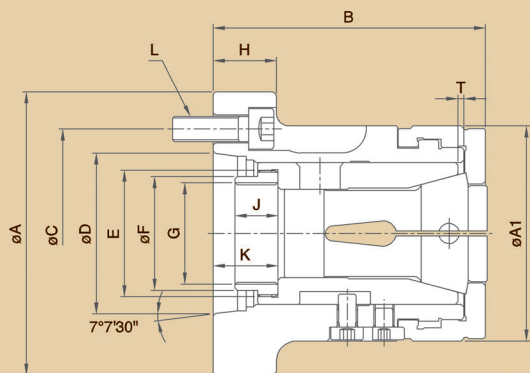


筒夾夾頭



使用筒夾必須符合DIN 6343規範
Use collect which conform with DIN6343

尺寸圖 » Dimensions



Spring Collet

規格表 » Specifications

單位/UNIT:mm

型式/規格 MODEL / SPEC.	A	A1	B	C	D	E
CK30A4	112	85	107.5	82.6	63.513	M50x1.5P
CK42A5	135	100	127	104.8	82.563	M66x1.5P
CK42A6	165	100	127	133.4	106.375	M66x1.5P
CK52A5	135	110	127	104.8	82.563	M72x1.5P
CK52A6	165	130	150	133.4	106.375	M90x1.5P
CK60A6	165	130	150	133.4	106.375	M90x1.5P

型式/規格 MODEL / SPEC.	F	G	H	J	K max.	K min.
CK30A4	45	M40x1.5P	25	17	28	23
CK42A5	60	M55x2P	27	25	34	28
CK42A6	65.8	M60x2P	32	25	34	28
CK52A5	67	M60x2P	27	15	34	28
CK52A6	67	M60x2P	27	30	38	32
CK60A6	82	M75x2P	27	30	38	32

型式/規格 MODEL / SPEC.	L	T	套筒行程 Sleeve Stroke (mm)	最高迴轉速 Max. Speed r.p.m (min ⁻¹)	搭配油壓缸型號 Matching Cylinder	搭配筒夾型號 Matching Collet Ref Spring Collet
CK30A4	3-M10x1.5P	2	5	7000	P1036	163E
CK42A5	4-M10x1.5P	1.5	6	6000	P1246	173E
CK42A6	4-M12x1.75P	1.5	6	6000	P1552	173E
CK52A5	4-M10x1.5P	1.5	6	6000	P1552	177E
CK52A6	4-M12x1.75P	1.5	6	6000	P1552	177E
CK60A6	4-M12x1.75P	1.5	6	5000	P1875	185E

型式/規格 MODEL / SPEC.	夾持範圍 Gripping Range			最大推力 Max. Push Force kgf (kN)	最大靜夾持力 Max. Gripping Force kgf (kN)	淨重 Weight (kg)
	圓棒 Round	六角材 Hexagonal	方材 Square			
CK30A4	ø3~ø30	4~27	5~20	2040(20)	4488(44)	4.0
CK42A5	ø3~ø42	6~36	6~30	2550(25)	5610(55)	6.2
CK42A6	ø3~ø42	6~36	6~30	2550(25)	5610(55)	7.6
CK52A5	ø5~ø52	8~45	7~36	2850(28)	6620(61)	6.7
CK52A6	ø5~ø52	8~45	7~36	2850(28)	6620(61)	12.1
CK60A6	ø4~ø60	8~52	7~42	3060(30)	6630(65)	11.1